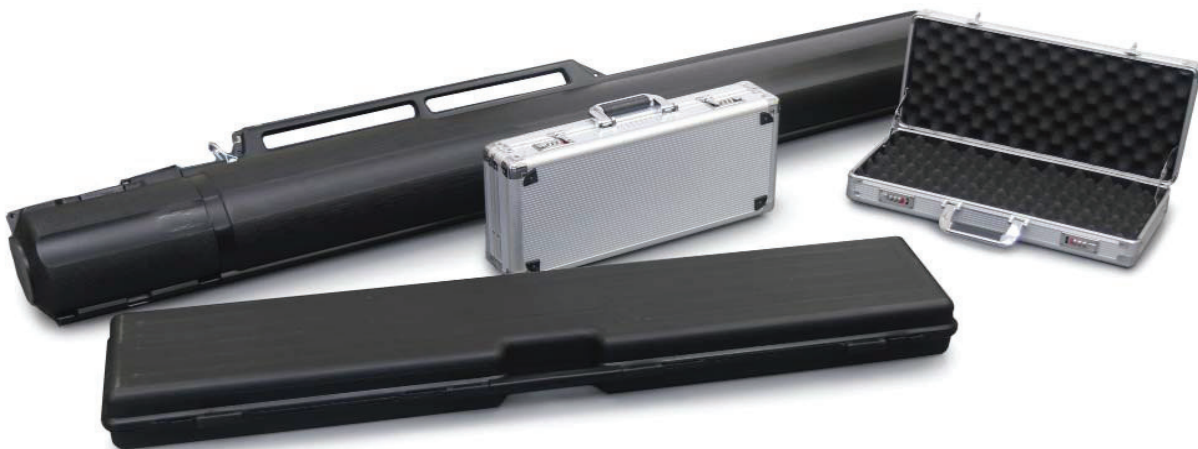




**QAQC LAB**

[www.qclabequipment.com](http://www.qclabequipment.com)

# SAMPLER CASES For safe storage and transportation



These cases are ideal for the safe storage and transportation of samplers and other equipment. They are also ideal for ensuring that your clean samplers remain clean while they are being stored or carried around the factory.

All cases are supplied with foam inners to protect the samplers.

## Aluminium Sampler Case

The QAQC LAB range of heavy duty cases are ideal for storing samplers.

- Lockable
- Aluminium outer
- Foam lined to protect your samplers
- Strong and robust
- Supplied with a sturdy carrying handle



Part No.	Description	Internal Dimensions L x W x H
675 8509A500	Aluminium Sampler Case 500mm	490 X 220 X 80mm
675 8509A1200	Aluminium Sampler Case 1200mm	1200 X 220 X 80mm
675 8509A1750	Aluminium Sampler Case 1750mm	1750 X 295 X 80mm

Accessories

## Sampler Cases

For safe storage and transporting

These cases are ideal for the safe storage and transportation of samplers. They are also ideal for ensuring that your clean samplers remain clean whilst they are being stored or carried around the factory. All cases are supplied with foam inners to protect the samplers.

### Mini Case

- Ideal for storing small samplers
- Simple clasps keep the case closed
- Economic



QUOTE REQUEST  BUY ONLINE 

Stock No.	Description	L x W x H
8505A-12	Mini Sampler Case	250 x 175 x 40 mm

### Standard Sampler Case

- Rugged plastic construction
- Four sliding clasps keep the case shut



QUOTE REQUEST  BUY ONLINE 

Stock No.	Description	L x W x H
675 8505A01	Standard Sampler Case	1210 x 225 x 96 mm

### Deluxe Sampler Case

- Lockable (2 keys supplied)
- High impact resistant outer
- Metal hinges for a long life
- Very high quality finish



QUOTE REQUEST  BUY ONLINE 

Stock No.	Description	L x W x H
675 8500A01	Superior Sampler Case	870 x 285 x 116mm

### Jumbo Sampler Case

- Rugged plastic construction
- Extends up to 2400mm
- Excellent Value



QUOTE REQUEST  BUY ONLINE 

Stock No.	Description	L x W x H	L x W x H Extended
675 8502A01	Jumbo Sampler Case	1800x140x140mm	2400 x140 x140mm